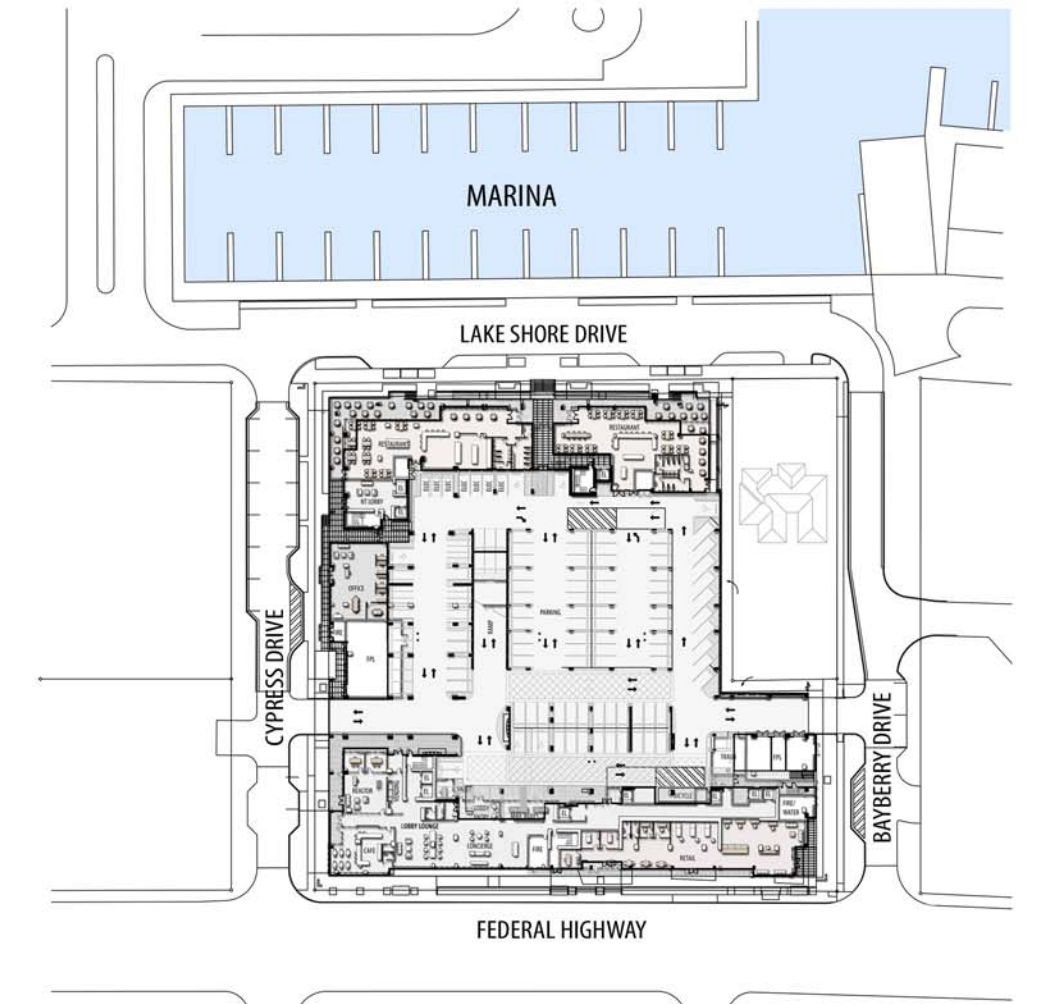
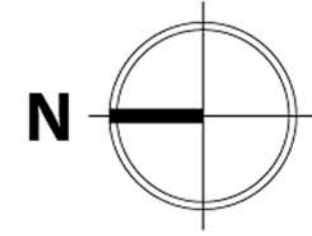


# 1 ST FLOOR



LOCATION MAP

## LEGEND

- EL ELEVATOR
- PR PACKAGE ROOM
- SEC SECURITY ROOM

# NAUTILUS 220

CONDOMINIUMS | WATERFRONT RESTAURANTS | RETAIL SHOPS | PROFESSIONAL OFFICE

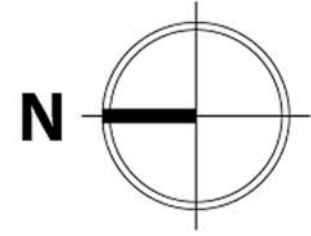
220 LAKESHORE DRIVE | LAKE PARK, FLORIDA 33403 | 561-336-9272 | NAUTILUS220.COM



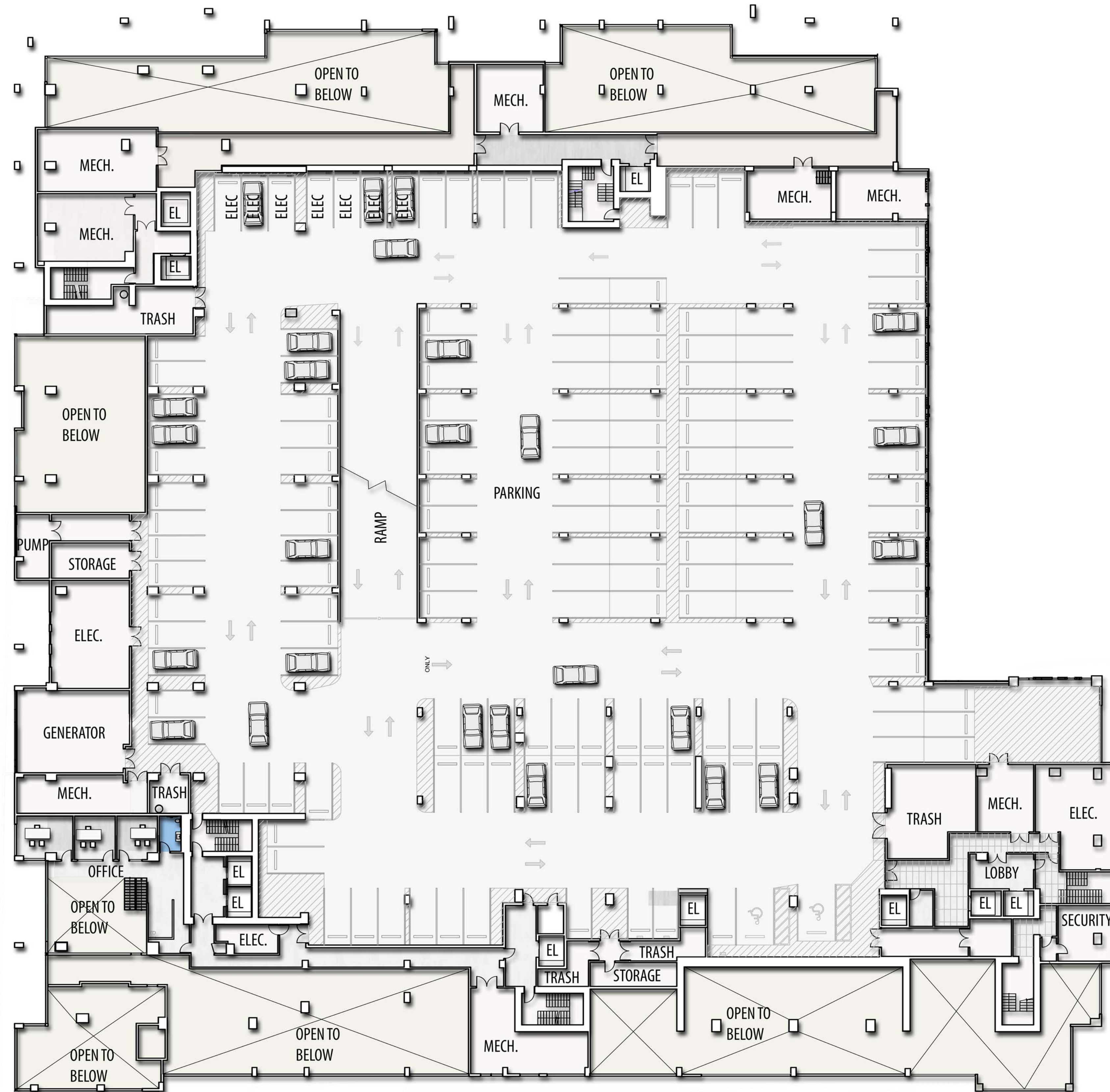
Stated dimensions are measured to the exterior boundaries of the exterior walls and the centerline of interior demising walls and in fact vary from the dimensions that would be determined by using the description and definition of the "Unit" set forth in the Declaration (which generally only includes the interior airspace between the perimeter walls and excludes interior structural components). Additionally, measurements of rooms set forth on any floor plan are generally taken at the greatest points of each given room (as if the room were a perfect rectangle), without regard for any cutouts. Accordingly, the area of the actual room will typically be smaller than the product obtained by multiplying the stated length times width. All dimensions are approximate, and all floor plans and development plans are subject to change.



# 2 ND FLOOR



CYPRESS DRIVE

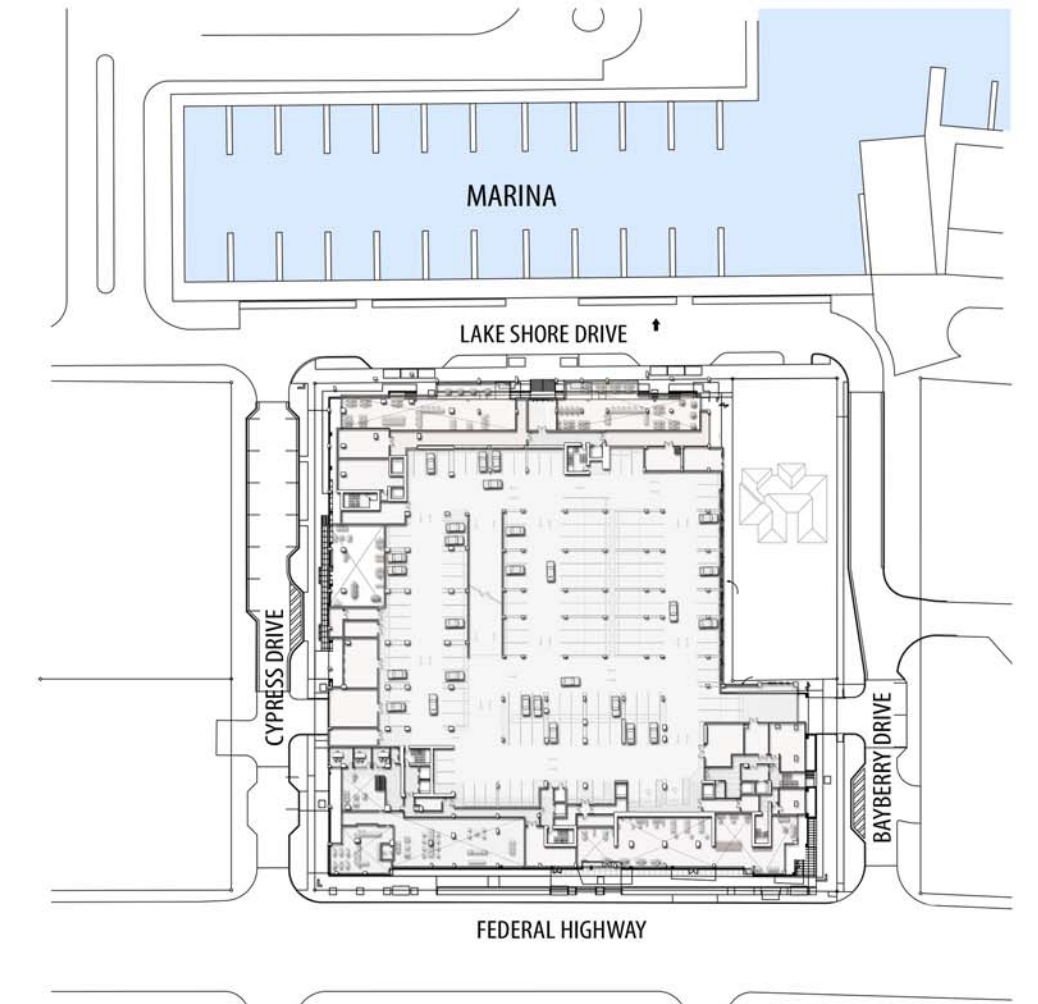


BAYBERRY DRIVE

FEDERAL HIGHWAY

## LEGEND

EL ELEVATOR  
MECH MECHANICAL ROOM



LOCATION MAP

# NAUTILUS 220

CONDOMINIUMS | WATERFRONT RESTAURANTS | RETAIL SHOPS | PROFESSIONAL OFFICE

220 LAKESHORE DRIVE | LAKE PARK, FLORIDA 33403 | 561-336-9272 | NAUTILUS220.COM



Stated dimensions are measured to the exterior boundaries of the exterior walls and the centerline of interior demising walls and in fact vary from the dimensions that would be determined by using the description and definition of the "Unit" set forth in the Declaration (which generally only includes the interior airspace between the perimeter walls and excludes interior structural components). Additionally, measurements of rooms set forth on any floor plan are generally taken at the greatest points of each given room (as if the room were a perfect rectangle), without regard for any cutouts. Accordingly, the area of the actual room will typically be smaller than the product obtained by multiplying the stated length times width. All dimensions are approximate, and all floor plans and development plans are subject to change.



3 RD  
FLOOR



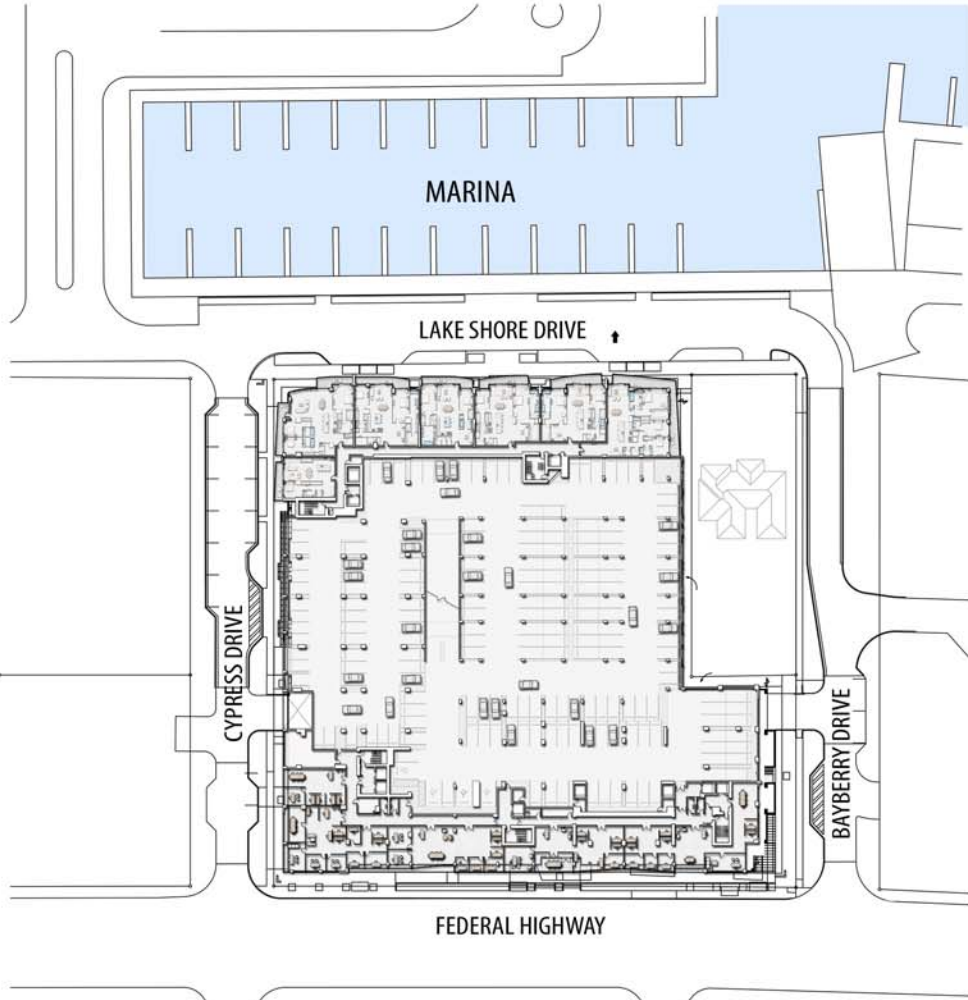
CYPRESS DRIVE

LAKE SHORE DRIVE

BAYBERRY DRIVE

LEGEND

- EL ELEVATOR
- MECH MECHANICAL ROOM
- TC TRASH CHUTE



LOCATION MAP

NAUTILUS 220

CONDOMINIUMS | WATERFRONT RESTAURANTS | RETAIL SHOPS | PROFESSIONAL OFFICE

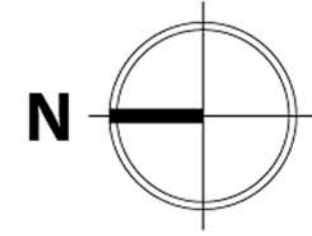
220 LAKESHORE DRIVE | LAKE PARK, FLORIDA 33403 | 561-336-9272 | NAUTILUS220.COM



Stated dimensions are measured to the exterior boundaries of the exterior walls and the centerline of interior demising walls and in fact vary from the dimensions that would be determined by using the description and definition of the "Unit" set forth in the Declaration (which generally only includes the interior airspace between the perimeter walls and excludes interior structural components). Additionally, measurements of rooms set forth on any floor plan are generally taken at the greatest points of each given room (as if the room were a perfect rectangle), without regard for any cutouts. Accordingly, the area of the actual room will typically be smaller than the product obtained by multiplying the stated length times width. All dimensions are approximate, and all floor plans and development plans are subject to change.



# 4TH FLOOR



CYPRESS DRIVE

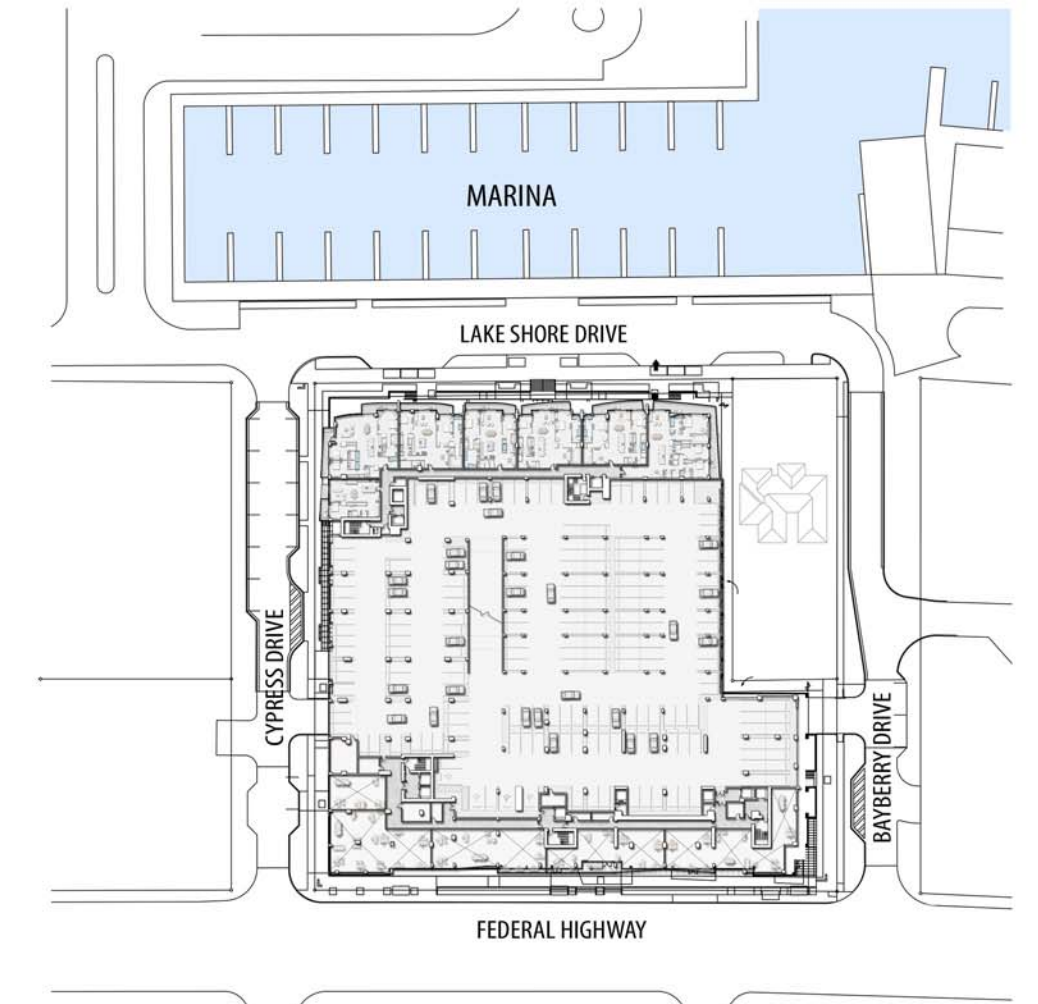
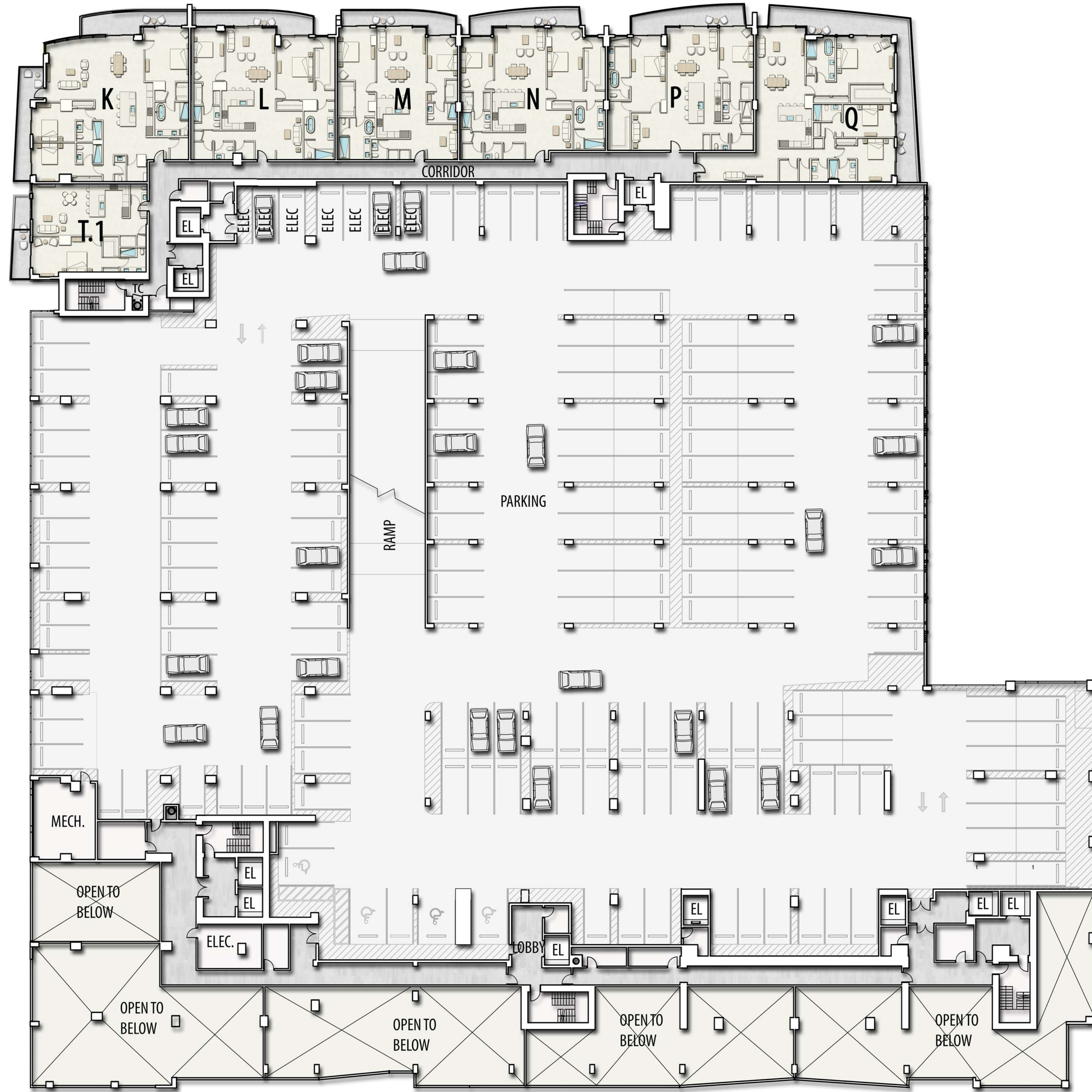
LAKE SHORE DRIVE

BAYBERRY DRIVE

FEDERAL HIGHWAY

## LEGEND

EL	ELEVATOR
MECH	MECHANICAL ROOM
TC	TRASH CHUTE



LOCATION MAP

# NAUTILUS 220

CONDOMINIUMS | WATERFRONT RESTAURANTS | RETAIL SHOPS | PROFESSIONAL OFFICE

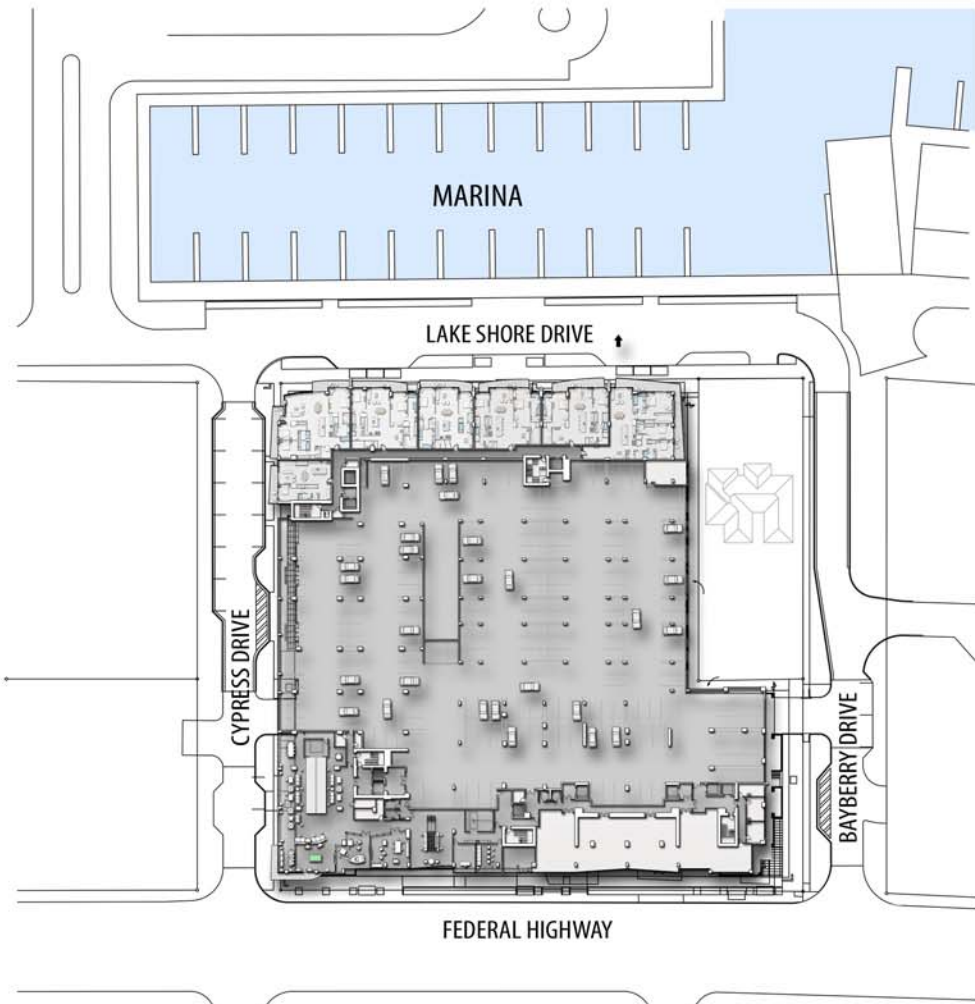
220 LAKESHORE DRIVE | LAKE PARK, FLORIDA 33403 | 561-336-9272 | NAUTILUS220.COM



Stated dimensions are measured to the exterior boundaries of the exterior walls and the centerline of interior demising walls and in fact vary from the dimensions that would be determined by using the description and definition of the "Unit" set forth in the Declaration (which generally only includes the interior airspace between the perimeter walls and excludes interior structural components). Additionally, measurements of rooms set forth on any floor plan are generally taken at the greatest points of each given room (as if the room were a perfect rectangle), without regard for any cutouts. Accordingly, the area of the actual room will typically be smaller than the product obtained by multiplying the stated length times width. All dimensions are approximate, and all floor plans and development plans are subject to change.



5 TH  
FLOOR



LOCATION MAP

LEGEND

CR	CRAFTS ROOM
EL	ELEVATOR
GOLF SIM.	GOLF SIMULATOR
LA	COMMERCIAL LAUNDRY
RW	RESIDENT WORK SHOP
MECH	MECHANICAL ROOM
TC	TRASH CHUTE

NAUTILUS 220

CONDOMINIUMS | WATERFRONT RESTAURANTS | RETAIL SHOPS | PROFESSIONAL OFFICE

220 LAKESHORE DRIVE | LAKE PARK, FLORIDA 33403 | 561-336-9272 | NAUTILUS220.COM



Stated dimensions are measured to the exterior boundaries of the exterior walls and the centerline of interior demising walls and in fact vary from the dimensions that would be determined by using the description and definition of the "Unit" set forth in the Declaration (which generally only includes the interior airspace between the perimeter walls and excludes interior structural components). Additionally, measurements of rooms set forth on any floor plan are generally taken at the greatest points of each given room (as if the room were a perfect rectangle), without regard for any cutouts. Accordingly, the area of the actual room will typically be smaller than the product obtained by multiplying the stated length times width. All dimensions are approximate, and all floor plans and development plans are subject to change.



# 6TH FLOOR



LAKE SHORE DRIVE

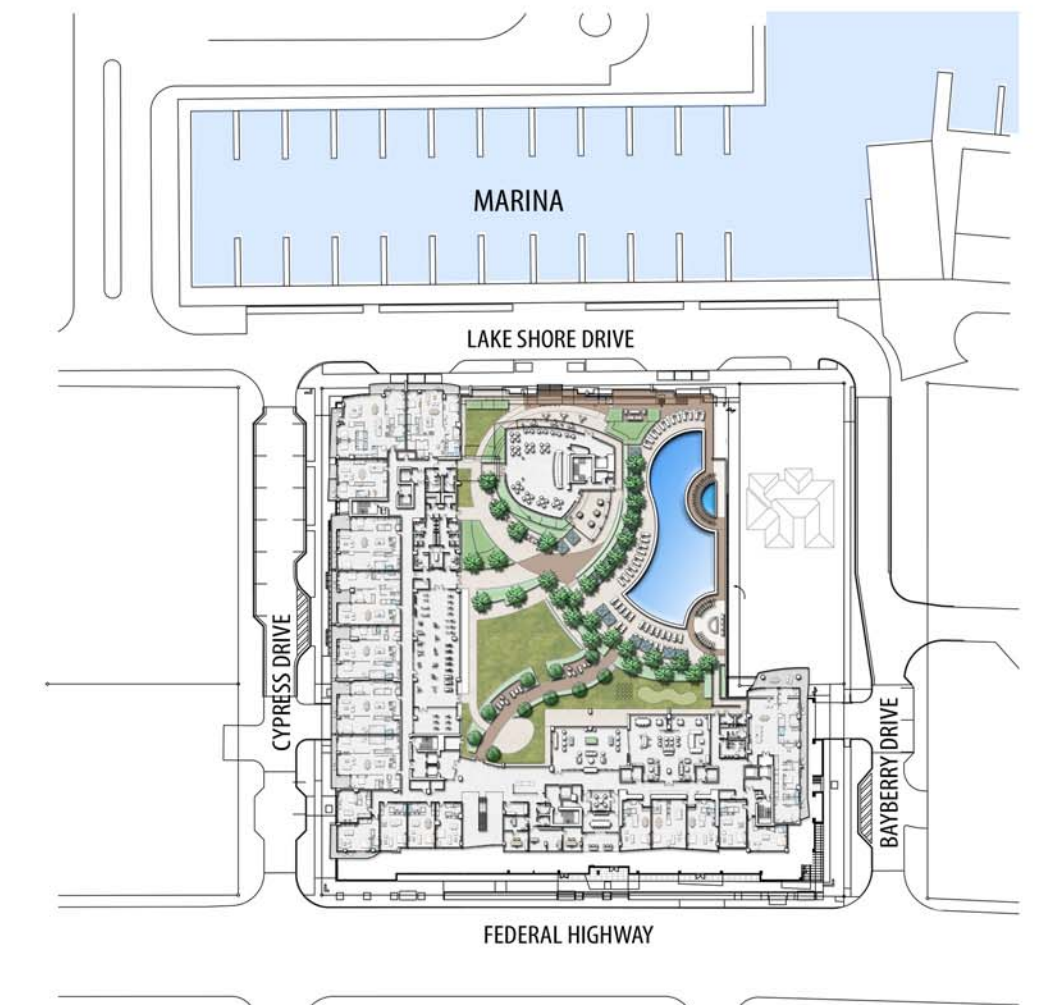
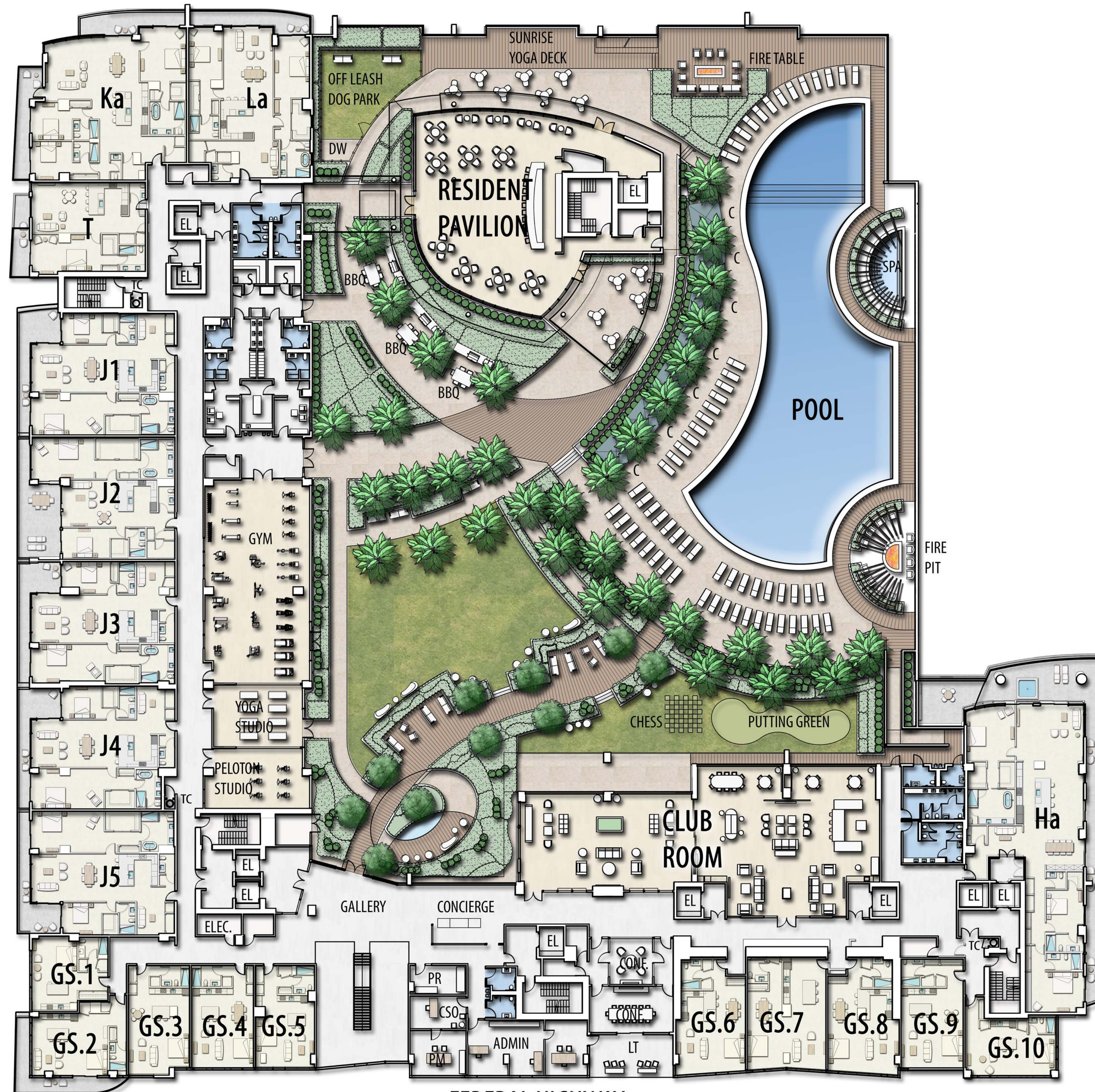
CYPRESS DRIVE

BAYBERRY DRIVE

FEDERAL HIGHWAY

## LEGEND

ADMIN	ADMINISTRATION
C	CABANA
CONF	CONFERENCE ROOM
CSO	CHIEF SECURITY OFFICER
DW	DOG WASHING STATION
EL	ELEVATOR
ELEC	ELECTRICAL ROOM
GS	GUEST SUITE
LT	LOUNGE TERRACE
MECH	MECHANICAL ROOM
PM	PROPERTY MANAGER
PR	PACKAGE ROOM
S	SAUNA/STEAM ROOM
TC	TRASH CHUTE



LOCATION MAP

# NAUTILUS 220

CONDOMINIUMS | WATERFRONT RESTAURANTS | RETAILS HOPS | PROFESSIONAL OFFICE

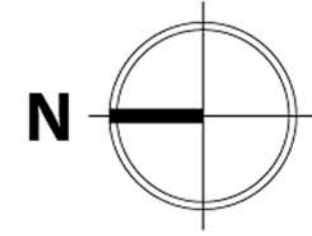
220 LAKESHORE DRIVE | LAKE PARK, FLORIDA 33403 | 561-336-9272 | NAUTILUS220.COM



Stated dimensions are measured to the exterior boundaries of the exterior walls and the centerline of interior demising walls and in fact vary from the dimensions that would be determined by using the description and definition of the "Unit" set forth in the Declaration (which generally only includes the interior airspace between the perimeter walls and excludes interior structural components). Additionally, measurements of rooms set forth on any floor plan are generally taken at the greatest points of each given room (as if the room were a perfect rectangle), without regard for any cutouts. Accordingly, the area of the actual room will typically be smaller than the product obtained by multiplying the stated length times width. All dimensions are approximate, and all floor plans and development plans are subject to change.



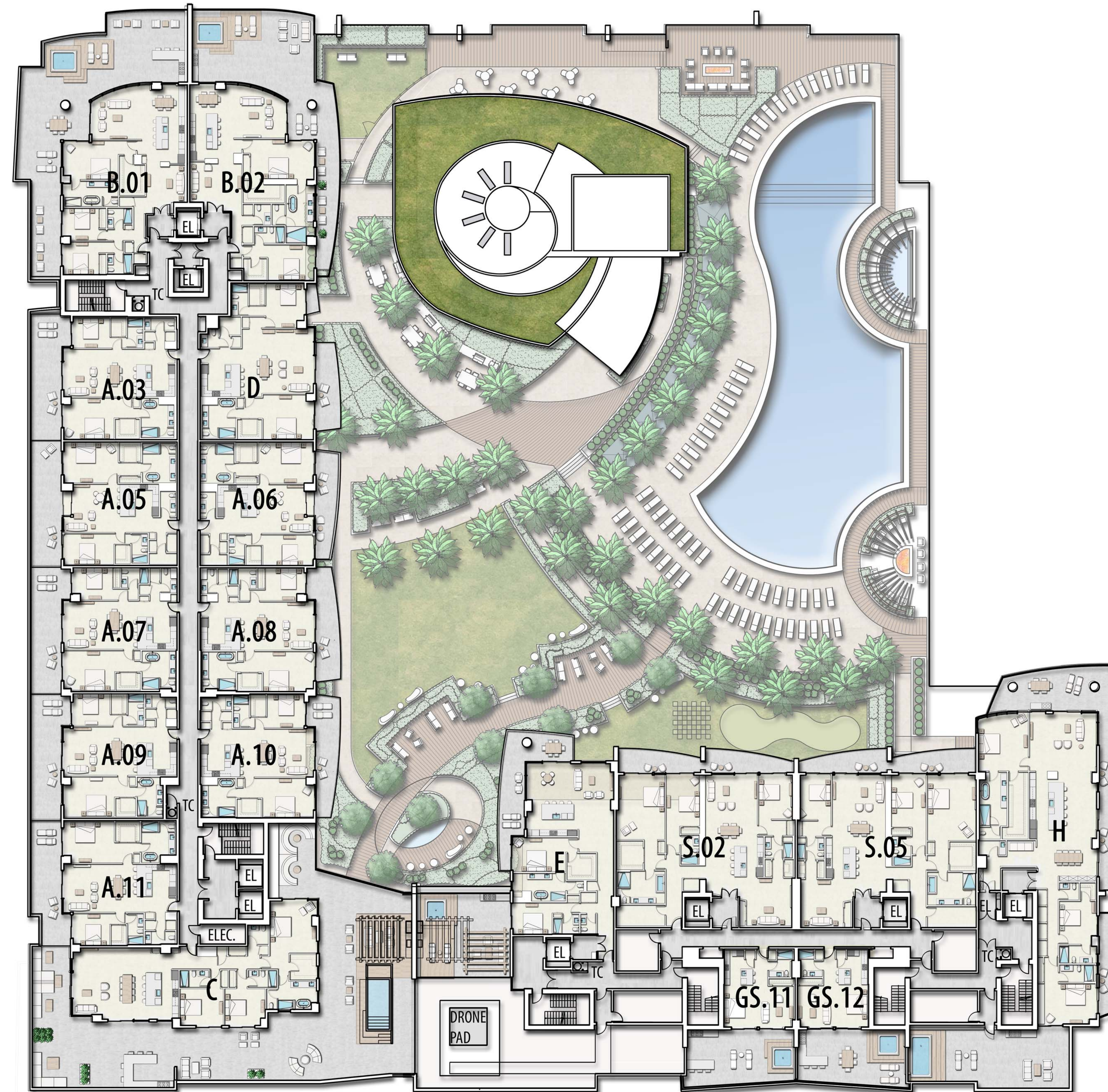
# 7TH FLOOR



CYPRESS DRIVE

## LEGEND

EL	ELEVATOR
GS	GUEST SUITE
MECH	MECHANICAL ROOM
TC	TRASH CHUTE



FEDERAL HIGHWAY

BAYBERRY DRIVE



LOCATION MAP

# NAUTILUS 220

CONDOMINIUMS | WATERFRONT RESTAURANTS | RETAIL SHOPS | PROFESSIONAL OFFICE

220 LAKESHORE DRIVE | LAKE PARK, FLORIDA 33403 | 561-336-9272 | NAUTILUS220.COM



Stated dimensions are measured to the exterior boundaries of the exterior walls and the centerline of interior demising walls and in fact vary from the dimensions that would be determined by using the description and definition of the "Unit" set forth in the Declaration (which generally only includes the interior airspace between the perimeter walls and excludes interior structural components). Additionally, measurements of rooms set forth on any floor plan are generally taken at the greatest points of each given room (as if the room were a perfect rectangle), without regard for any cutouts. Accordingly, the area of the actual room will typically be smaller than the product obtained by multiplying the stated length times width. All dimensions are approximate, and all floor plans and development plans are subject to change.



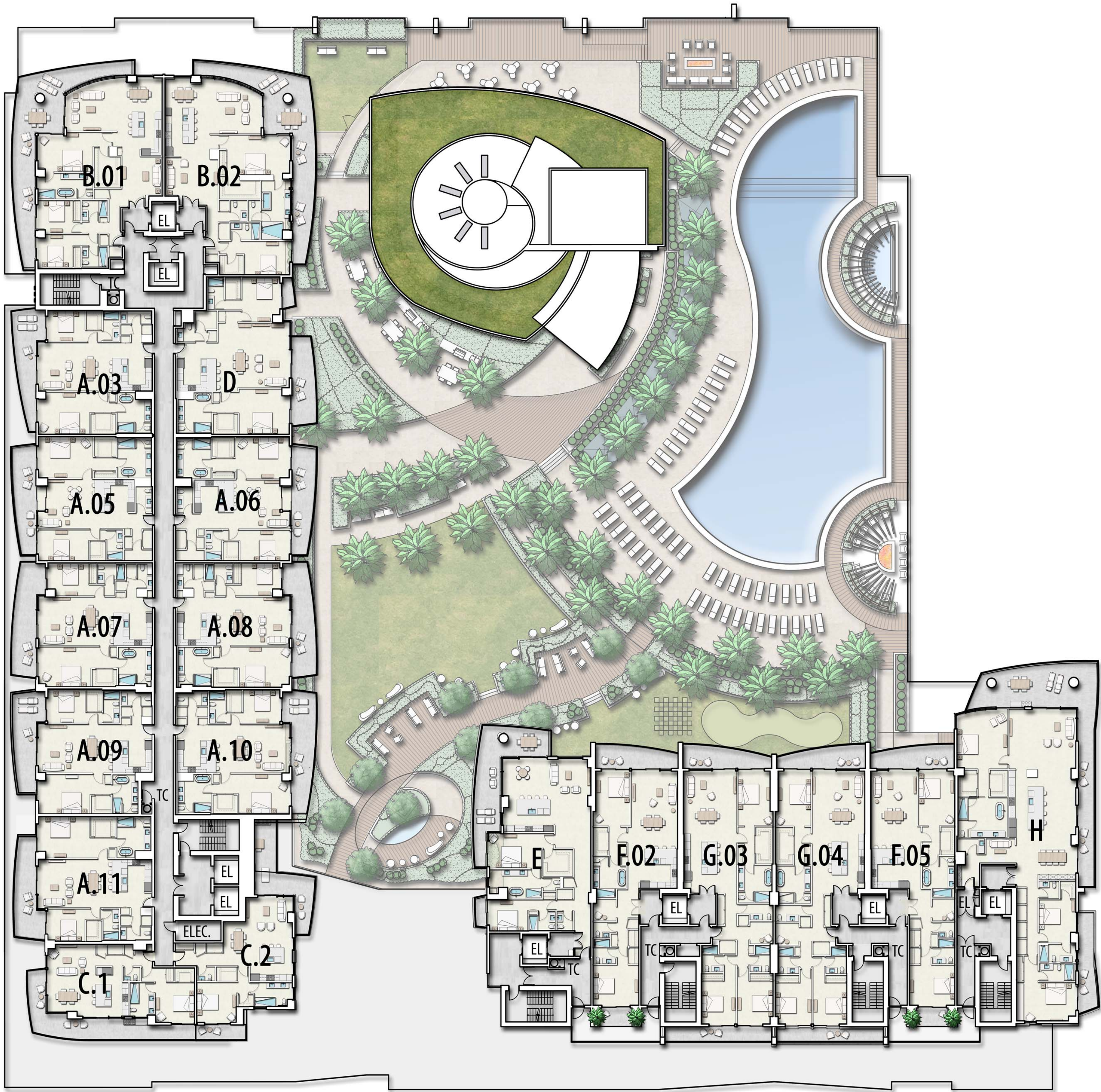
8TH TO 12TH  
FLOOR



CYPRESS DRIVE

LEGEND

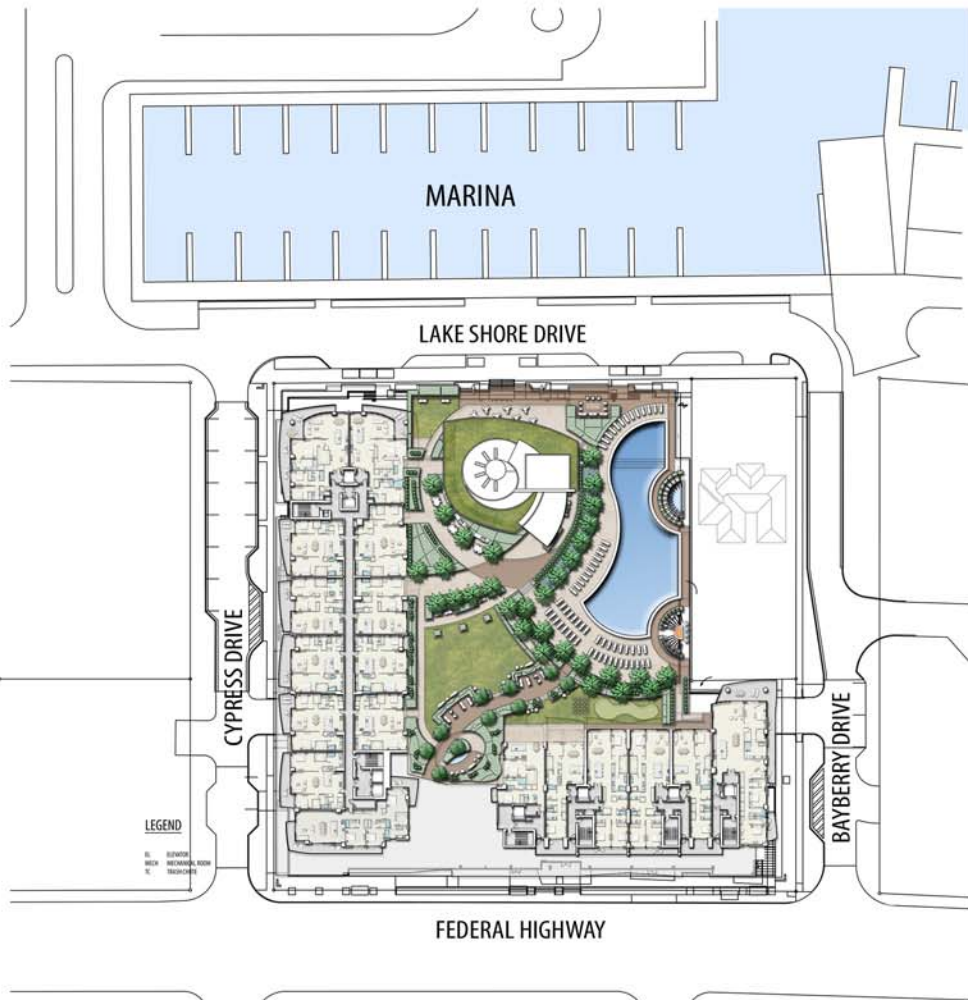
- EL ELEVATOR
- MECH MECHANICAL ROOM
- TC TRASH CHUTE



LAKE SHORE DRIVE

FEDERAL HIGHWAY

BAYBERRY DRIVE



LOCATION MAP

NAUTILUS 220

CONDOMINIUMS | WATERFRONT RESTAURANTS | RETAIL SHOPS | PROFESSIONAL OFFICE

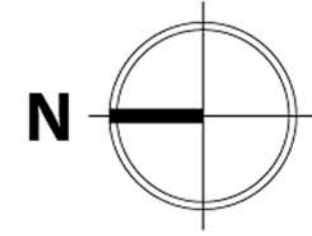
220 LAKESHORE DRIVE | LAKE PARK, FLORIDA 33403 | 561-336-9272 | NAUTILUS220.COM



Stated dimensions are measured to the exterior boundaries of the exterior walls and the centerline of interior demising walls and in fact vary from the dimensions that would be determined by using the description and definition of the "Unit" set forth in the Declaration (which generally only includes the interior airspace between the perimeter walls and excludes interior structural components). Additionally, measurements of rooms set forth on any floor plan are generally taken at the greatest points of each given room (as if the room were a perfect rectangle), without regard for any cutouts. Accordingly, the area of the actual room will typically be smaller than the product obtained by multiplying the stated length times width. All dimensions are approximate, and all floor plans and development plans are subject to change.



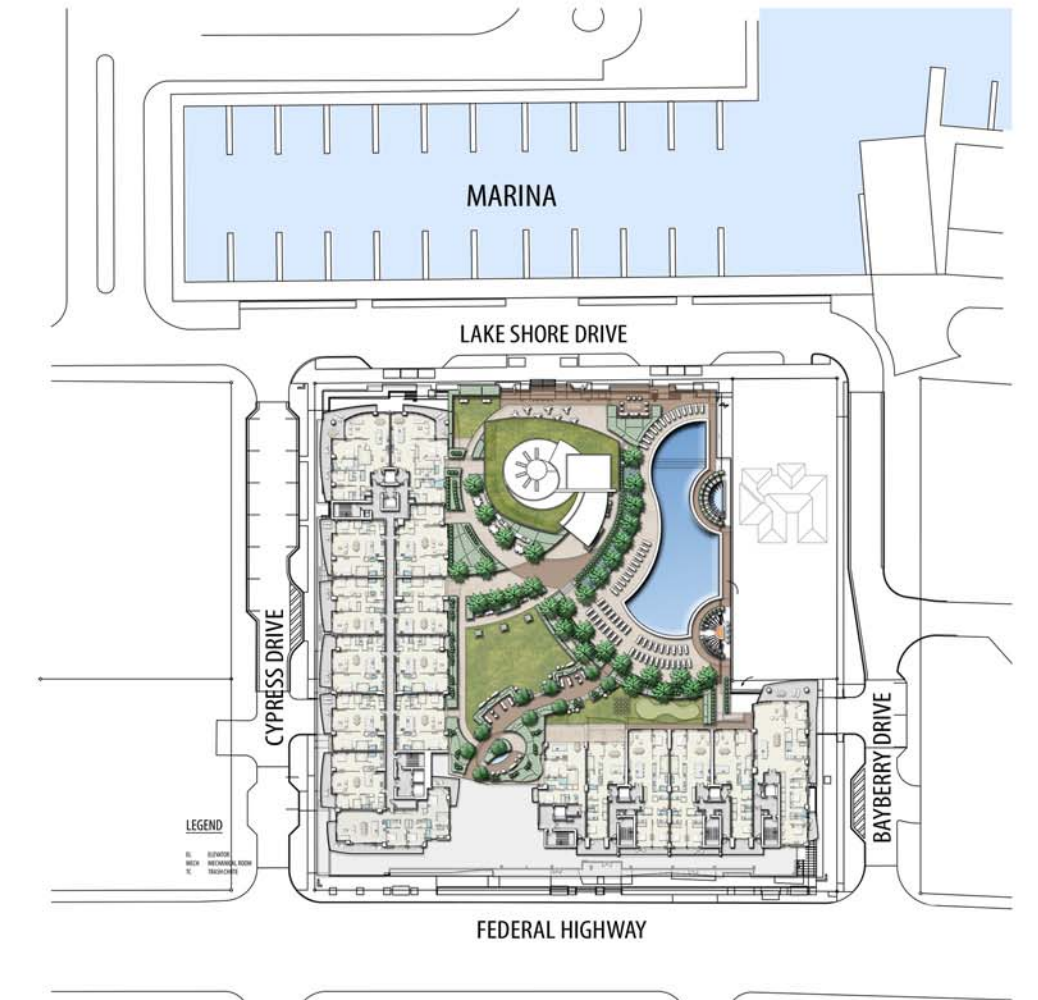
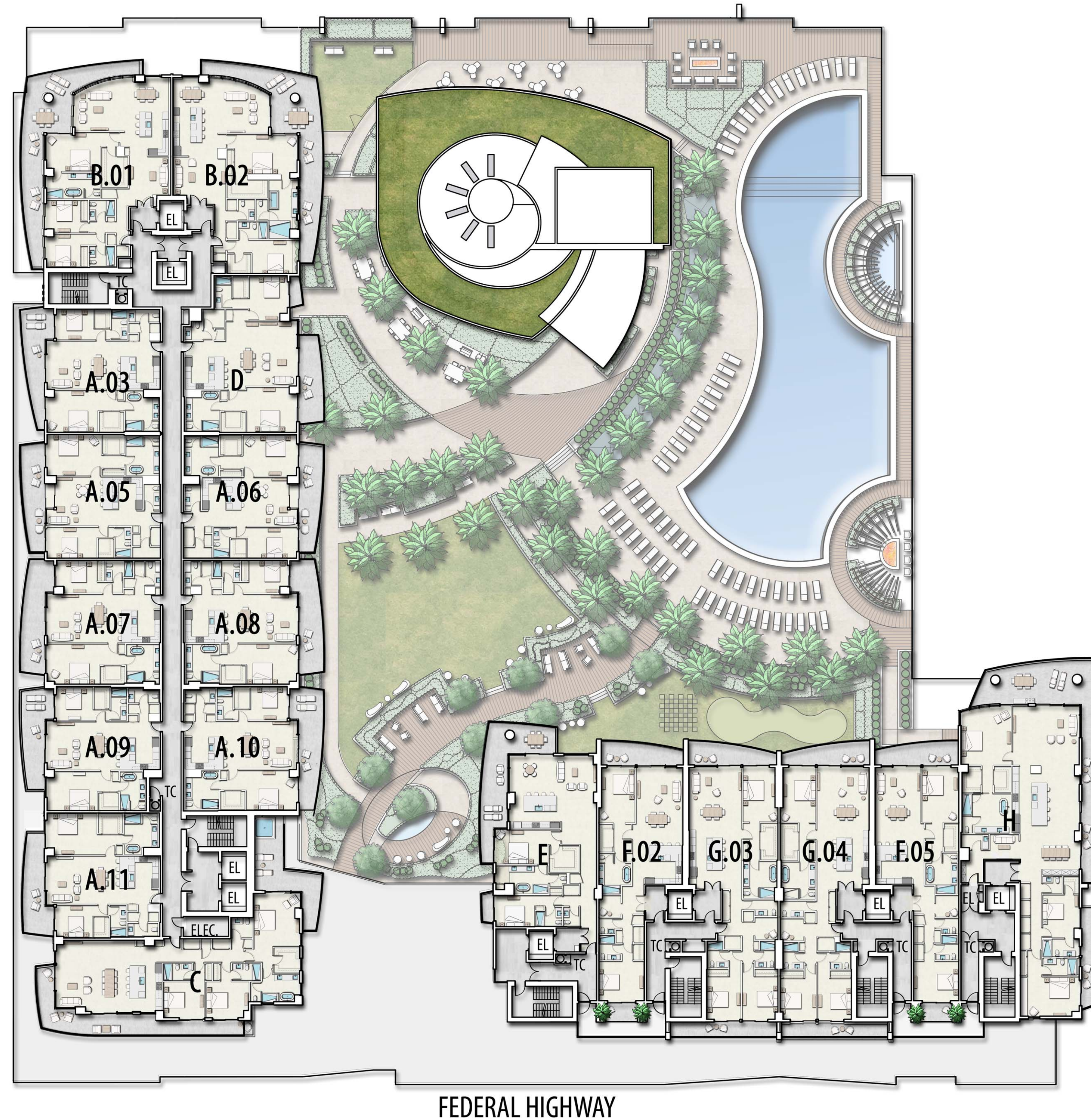
# 14 TH TO 19 TH FLOOR



CYPRESS DRIVE

## LEGEND

EL ELEVATOR  
MECH MECHANICAL ROOM  
TC TRASH CHUTE



LOCATION MAP

BAYBERRY DRIVE

# NAUTILUS 220

CONDOMINIUMS | WATERFRONT RESTAURANTS | RETAIL SHOPS | PROFESSIONAL OFFICE

220 LAKESHORE DRIVE | LAKE PARK, FLORIDA 33403 | 561-336-9272 | NAUTILUS220.COM



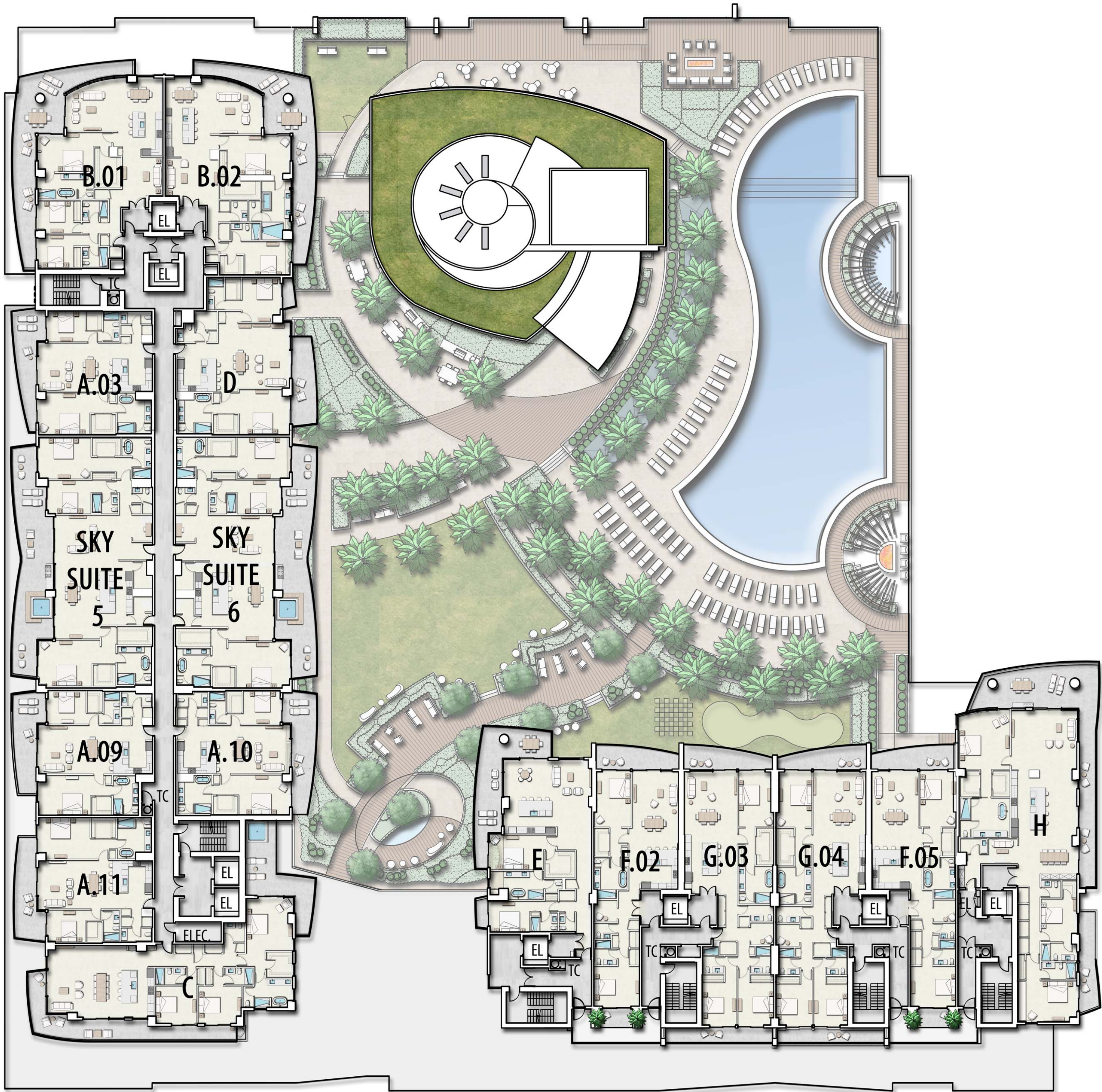
Stated dimensions are measured to the exterior boundaries of the exterior walls and the centerline of interior demising walls and in fact vary from the dimensions that would be determined by using the description and definition of the "Unit" set forth in the Declaration (which generally only includes the interior airspace between the perimeter walls and excludes interior structural components). Additionally, measurements of rooms set forth on any floor plan are generally taken at the greatest points of each given room (as if the room were a perfect rectangle), without regard for any cutouts. Accordingly, the area of the actual room will typically be smaller than the product obtained by multiplying the stated length times width. All dimensions are approximate, and all floor plans and development plans are subject to change.



20 TH to 22 ND  
FLOOR



CYPRESS DRIVE



FEDERAL HIGHWAY

BAYBERRY DRIVE

LEGEND

- EL ELEVATOR
- MECH MECHANICAL ROOM
- TC TRASH CHUTE



LOCATION MAP

NAUTILUS 220

CONDOMINIUMS | WATERFRONT RESTAURANTS | RETAIL SHOPS | PROFESSIONAL OFFICE

220 LAKESHORE DRIVE | LAKE PARK, FLORIDA 33403 | 561-336-9272 | NAUTILUS220.COM



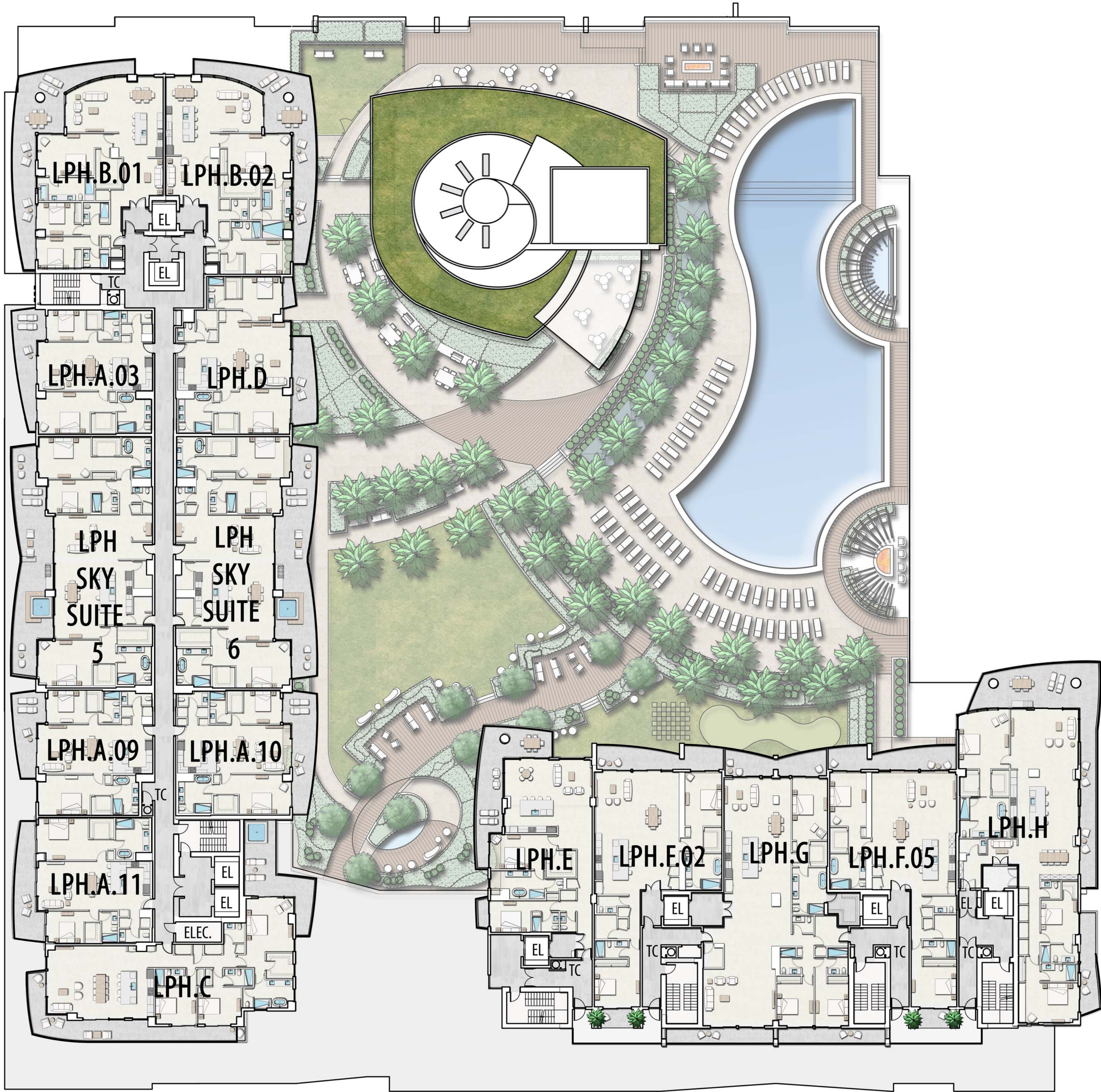
Stated dimensions are measured to the exterior boundaries of the exterior walls and the centerline of interior demising walls and in fact vary from the dimensions that would be determined by using the description and definition of the "Unit" set forth in the Declaration (which generally only includes the interior airspace between the perimeter walls and excludes interior structural components). Additionally, measurements of rooms set forth on any floor plan are generally taken at the greatest points of each given room (as if the room were a perfect rectangle), without regard for any cutouts. Accordingly, the area of the actual room will typically be smaller than the product obtained by multiplying the stated length times width. All dimensions are approximate, and all floor plans and development plans are subject to change.



23RD  
FLOOR



CYPRESS DRIVE



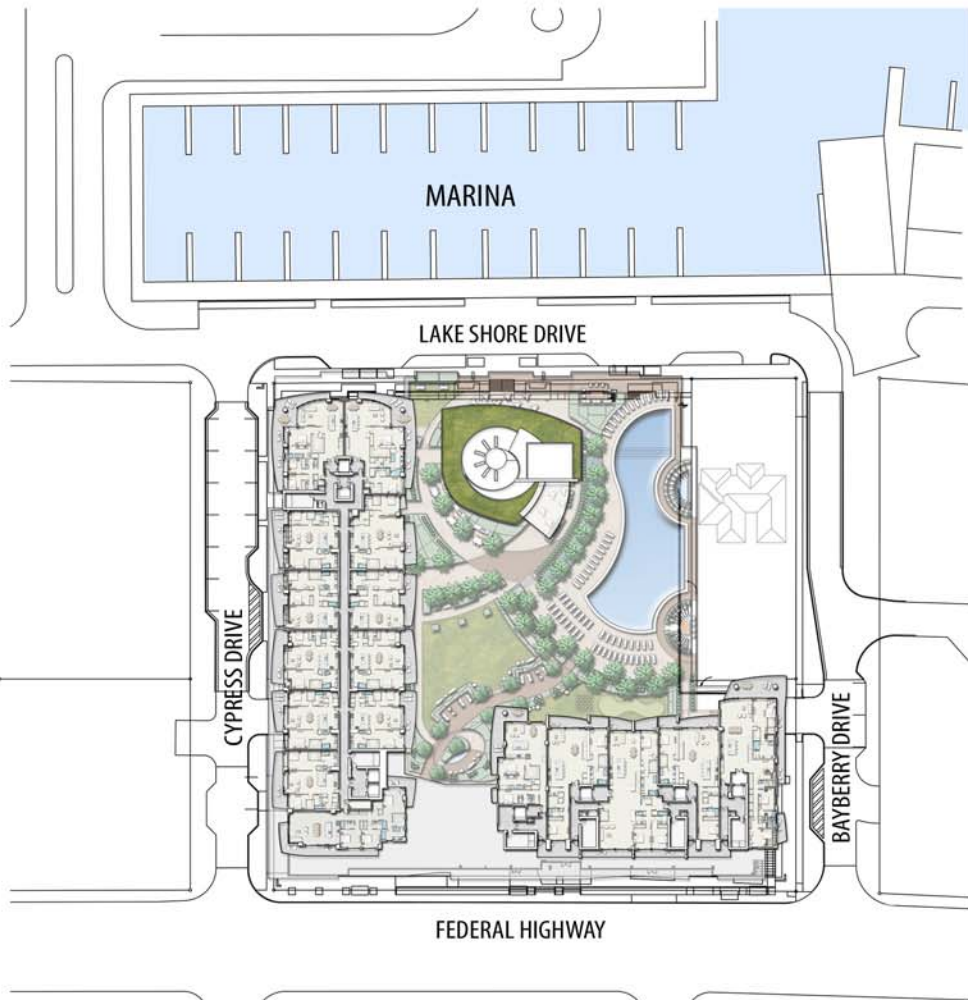
LAKE SHORE DRIVE

FEDERAL HIGHWAY

BAYBERRY DRIVE

LEGEND

- EL ELEVATOR
- MECH MECHANICAL ROOM
- TC TRASH CHUTE



LOCATION MAP

NAUTILUS 220

CONDOMINIUMS | WATERFRONT RESTAURANTS | RETAIL SHOPS | PROFESSIONAL OFFICE

220 LAKESHORE DRIVE | LAKE PARK, FLORIDA 33403 | 561-336-9272 | NAUTILUS220.COM



Stated dimensions are measured to the exterior boundaries of the exterior walls and the centerline of interior demising walls and in fact vary from the dimensions that would be determined by using the description and definition of the "Unit" set forth in the Declaration (which generally only includes the interior airspace between the perimeter walls and excludes interior structural components). Additionally, measurements of rooms set forth on any floor plan are generally taken at the greatest points of each given room (as if the room were a perfect rectangle), without regard for any cutouts. Accordingly, the area of the actual room will typically be smaller than the product obtained by multiplying the stated length times width. All dimensions are approximate, and all floor plans and development plans are subject to change.



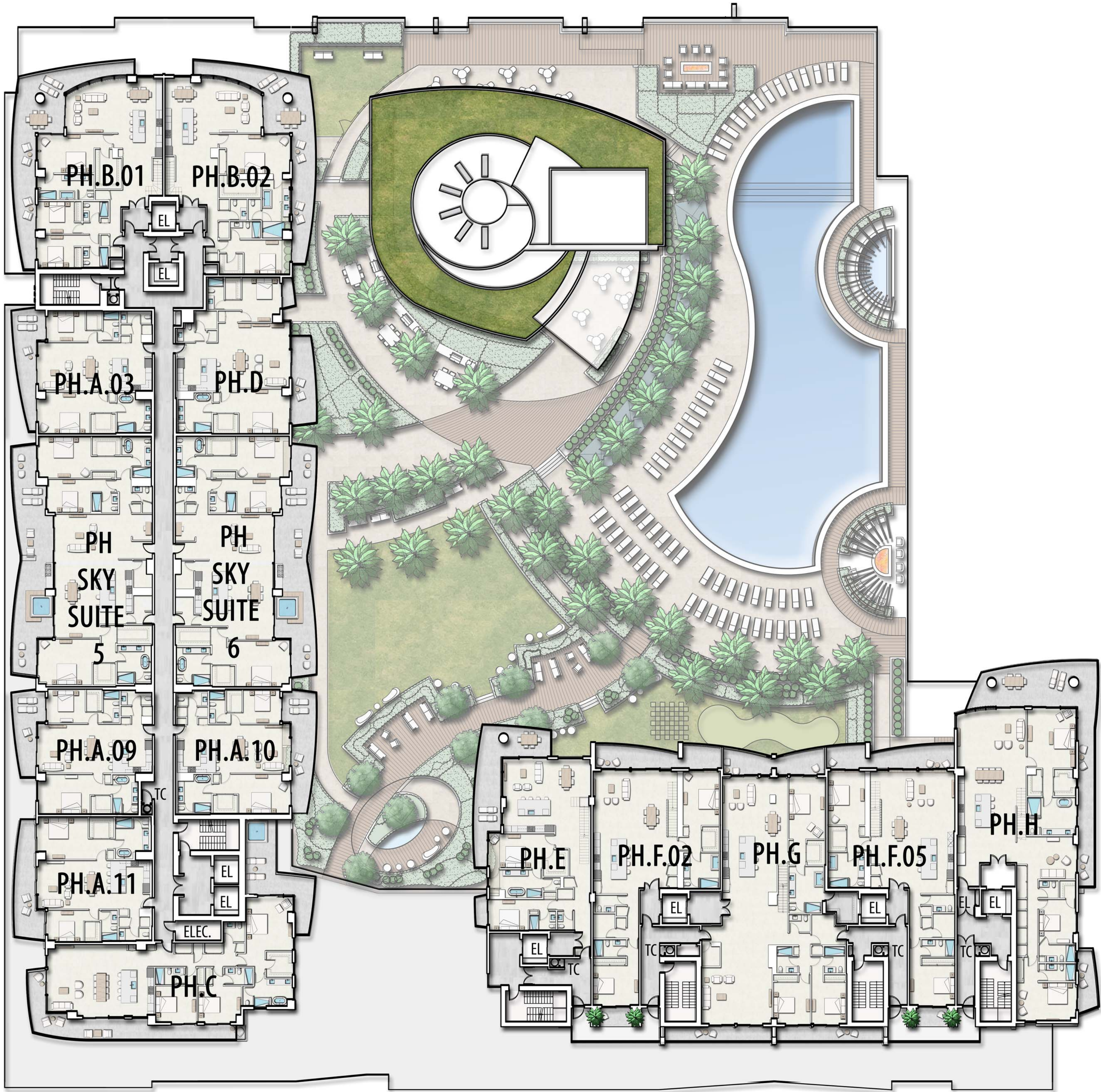
24TH  
FLOOR



CYPRESS DRIVE

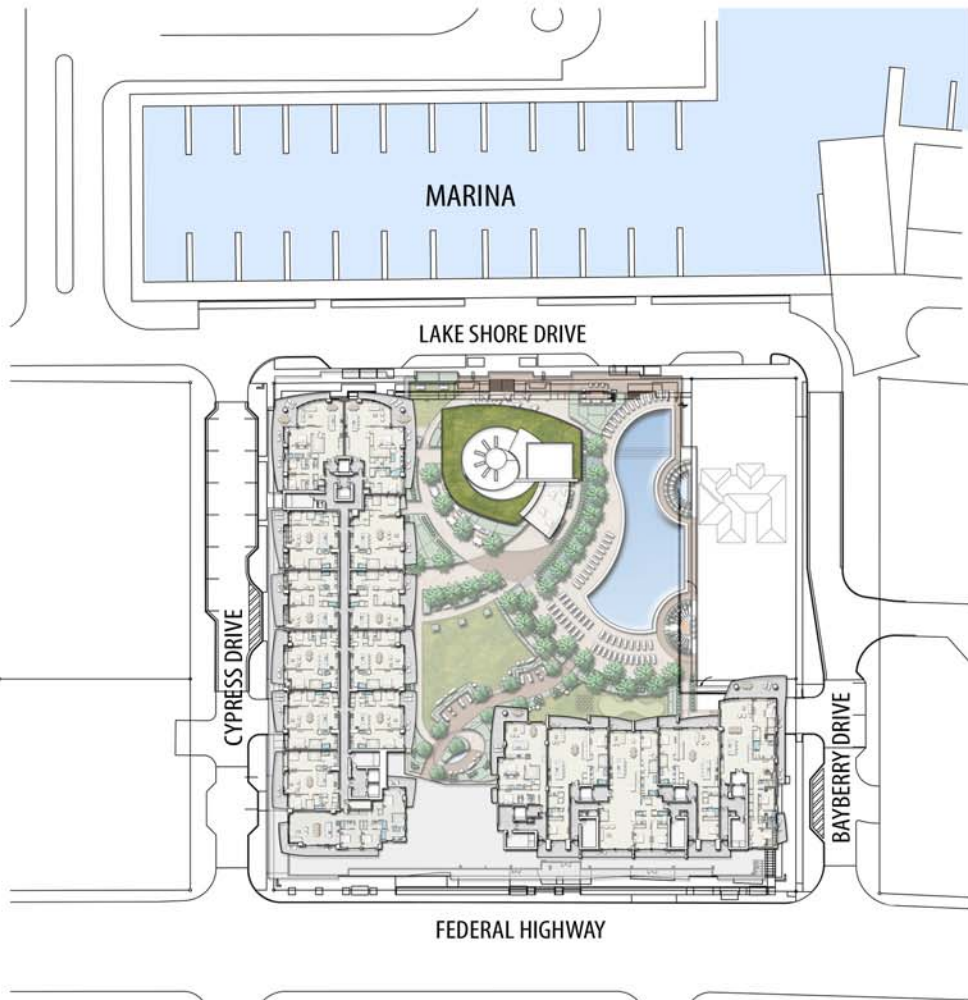
LEGEND

- EL ELEVATOR
- MECH MECHANICAL ROOM
- TC TRASH CHUTE



FEDERAL HIGHWAY

BAYBERRY DRIVE



LOCATION MAP

NAUTILUS 220

CONDOMINIUMS | WATERFRONT RESTAURANTS | RETAIL SHOPS | PROFESSIONAL OFFICE

220 LAKESHORE DRIVE | LAKE PARK, FLORIDA 33403 | 561-336-9272 | NAUTILUS220.COM



Stated dimensions are measured to the exterior boundaries of the exterior walls and the centerline of interior demising walls and in fact vary from the dimensions that would be determined by using the description and definition of the "Unit" set forth in the Declaration (which generally only includes the interior airspace between the perimeter walls and excludes interior structural components). Additionally, measurements of rooms set forth on any floor plan are generally taken at the greatest points of each given room (as if the room were a perfect rectangle), without regard for any cutouts. Accordingly, the area of the actual room will typically be smaller than the product obtained by multiplying the stated length times width. All dimensions are approximate, and all floor plans and development plans are subject to change.



25TH  
FLOOR



CYPRESS DRIVE

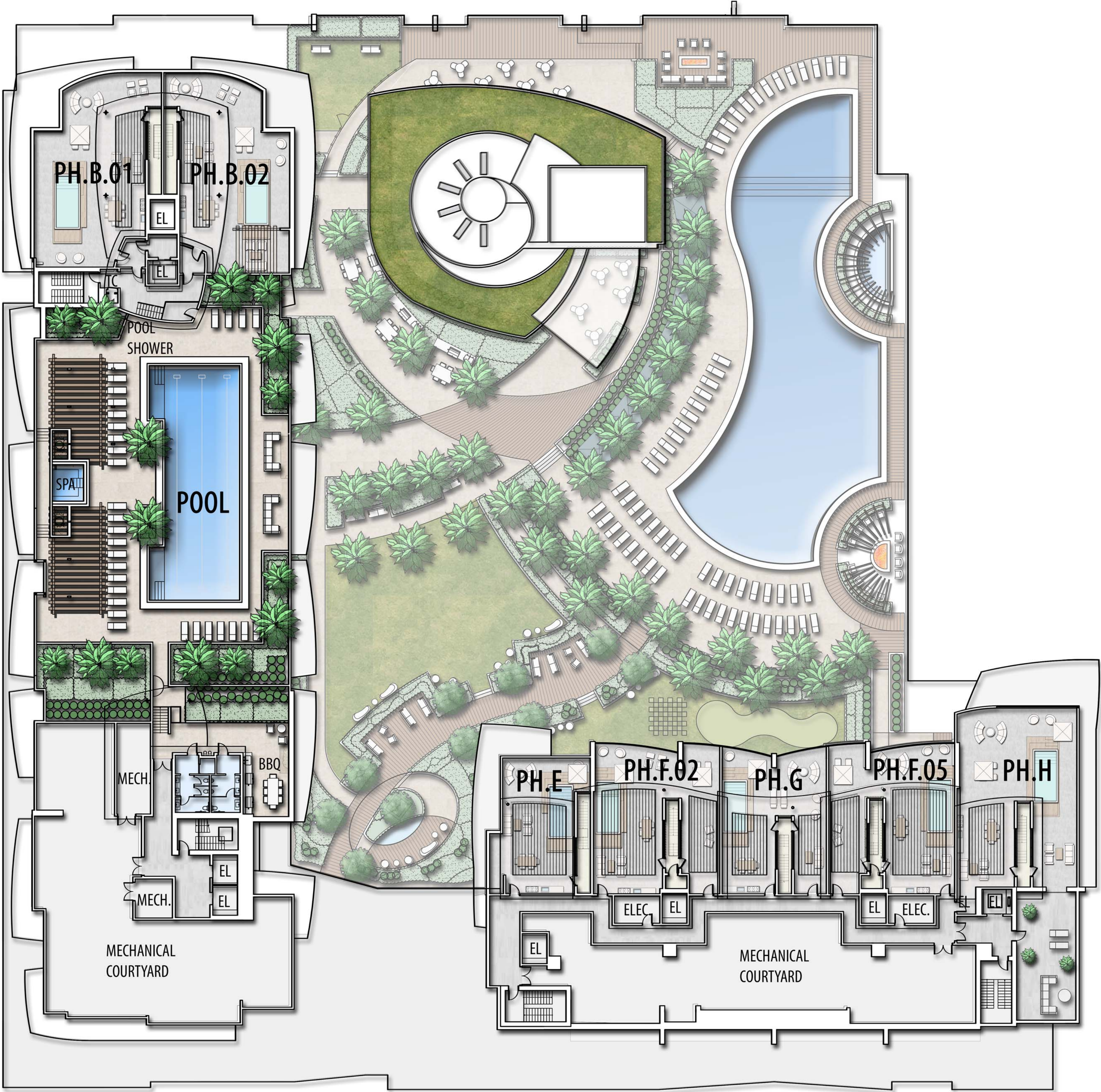
LAKE SHORE DRIVE

BAYBERRY DRIVE

FEDERAL HIGHWAY

LEGEND

- EL ELEVATOR
- MECH MECHANICAL ROOM
- TC TRASH CHUTE



LOCATION MAP

NAUTILUS 220

CONDOMINIUMS | WATERFRONT RESTAURANTS | RETAIL SHOPS | PROFESSIONAL OFFICE

220 LAKESHORE DRIVE | LAKE PARK, FLORIDA 33403 | 561-336-9272 | NAUTILUS220.COM



Stated dimensions are measured to the exterior boundaries of the exterior walls and the centerline of interior demising walls and in fact vary from the dimensions that would be determined by using the description and definition of the "Unit" set forth in the Declaration (which generally only includes the interior airspace between the perimeter walls and excludes interior structural components). Additionally, measurements of rooms set forth on any floor plan are generally taken at the greatest points of each given room (as if the room were a perfect rectangle), without regard for any cutouts. Accordingly, the area of the actual room will typically be smaller than the product obtained by multiplying the stated length times width. All dimensions are approximate, and all floor plans and development plans are subject to change.